



AF64-4002 & AF64-4002BLK

Small Block Chevy mid mount drivers side alternator bracket kit.

Congratulations on the purchase of your new Aeroflow Performance Product

We recommend applying Anti-Seize to all threads when assembling bracket.

1) Disconnect Battery; remove all existing accessory drive brackets and components from motor. Disconnect all existing power steering lines and cap.

2) Remove water pump and existing accessory drive brackets; scrape any remaining gasket material from all surfaces.

3) Clean & prep threads on drivers side cylinder head (outside hole) and left side of water pump. Run a 3/8-16 thread cleaner if necessary. Thread cleaners are available at your local auto parts store or tool dealer and are different from a thread cutting tool.

4) Thread the 3/8-16 x 32mm threaded stud into the outside passenger side cylinder head and finger tighten. There should be no more than 16mm of thread left exposed (if more than 16mm thread is showing, remove stud and clean out threads then reinstall threaded stud and check again). Apply anti-seize to the exposed threads on the stud.

5) Thread the 3/8-16 x 63mm threaded studs into the drivers side water pump mount holes and tighten. The studs can easily be tightened by threading two 3/8-16 nuts (not included) onto the stud and tighten them against each other to act as a drive nut. Apply RTV sealer to engine block and water pump.

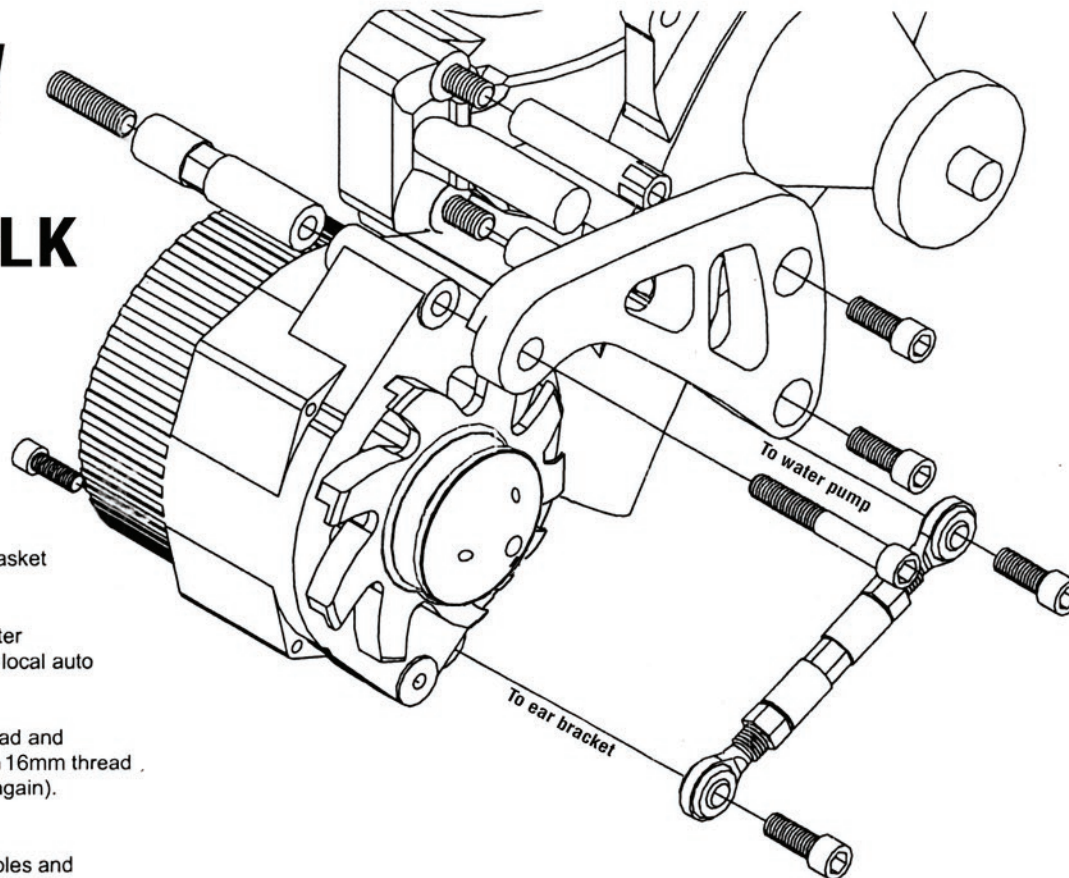
6) Install gaskets and then water pump. There should be no more than 16mm of thread left exposed on studs (if more than 16mm thread is showing, remove stud(s) and clean out threads then reinstall threaded stud(s) and check again). Apply anti-seize to the exposed threads on the studs. Also apply anti-seize to the threads of all the remaining fasteners at this time.

7) Replace right side water pump bolts and thread the two 71mm spacer nuts with the hex end outward to the studs on the drivers side of the water pump and tighten firmly.

8) Thread the 85mm spacer nut to the stud on the drivers side cylinder head and tighten firmly.

9) Attach the alternator bracket to the water pump spacer nuts with the two 3/8-16 x 19mm stainless socket head cap screws and finger tighten.

10) Thread the 3/8-16 x 25mm stainless socket head cap screw through one end of the rose joint assembly and into the lower water pump boss and tighten firmly. Allow the adjuster to swing down and rest out of the way.



11) Attach the alternator ear bracket to the back of the alternator boss with the 5/16-18 x 19mm stainless socket head cap screw and tighten (26 ft. /lb.).

12) Place the alternator between the spacer nut and alternator bracket and thread the 3/8-16 x 70mm stainless socket head cap screw through the Alternator bracket & alternator into the spacer nut and finger tighten.

13) Swing the alternator into position and match up the alternator ear bracket to the rose joint assembly, thread the 3/8-16 x 25mm stainless socket head cap screw through the rose joint rod end into the alternator ear bracket and tighten (46ft. /lb.). After all brackets are installed make sure alternator still spins.

14) Route belt around alternator, water pump and crank pulleys. Twist rose joint adjuster by hand until proper belt tension is achieved. Do not over-tighten belt! Serious damage may occur to the accessory drive bearings resulting in premature wear.

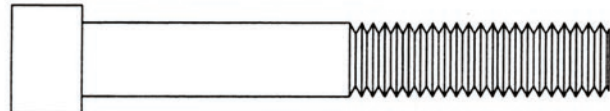
15) Tighten jam nuts on rose joint assembly, tighten alternator socket head screw (46ft. /lb.) and tighten alternator bracket screws on water pump (46ft. /lb.) Re-check belt tension.

16) Reconnect electrical and test run motor. Re-check belt tension after 100 km's .

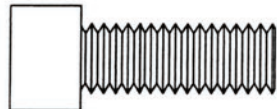
www.aeroflowperformance.com



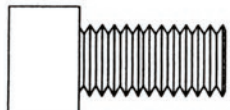
AF64-4002 & AF64-4002BLK
Small Block Chevy mid mount
drivers side alternator bracket kit.



3/8-16 x 70mm Socket Head Cap Screw (x1)



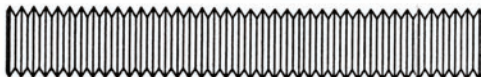
3/8-16 x 25mm Socket Head Cap Screw (x2)



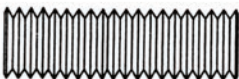
3/8-16 x 19mm Socket Head Cap Screw (x2)



5/16-18 x 19mm Socket Head Cap Screw (x1)



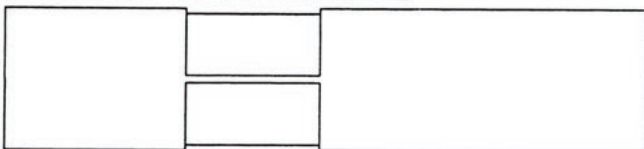
3/8-16 x 63mm Threaded Stud (x2)



3/8-16 x 32mm Threaded Stud (x1)



71mm Spacer Nut (x2)



85mm Spacer Nut (x1)

